

# DC REACTORS

## ADVANTAGES

SK Electric designs and manufactures a broad range of transformers, reactors and inductors, these include an extensive line of standard products, as well as custom-built products.

We strive to make the most consistent and reliable power supplies in the world, driven by the following key principles;

- Diverse engineering capability.
- Stringent quality control.
- Highly skilled production staff.
- Control throughout our supply chain.
- Compliance with the highest international quality standards.
- Global customer support.
- Stringent intellectual property management practices.

These principles allow us to meet and exceed customers' requests whilst maintaining a competitive cost structure.

Our quality control includes 100% final testing to meet all required international industry standards and statistical process controls.

We lead in the development of methods to meet UL and TUV safety specifications. We have developed effective state of the art design and manufacturing techniques for high-volume self-supporting coils, high frequency high voltage transformers, EI transformers, toroidal transformers, reactors and many other power solutions.

Whether you require a standard, off-the-shelf unit, or one customized unit to fit your exacting requirements, SK Electric expert sales and engineering staff will work closely with you to meet your needs.

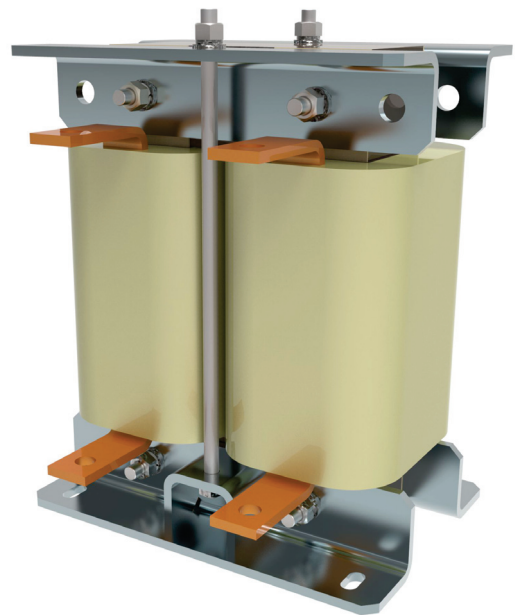
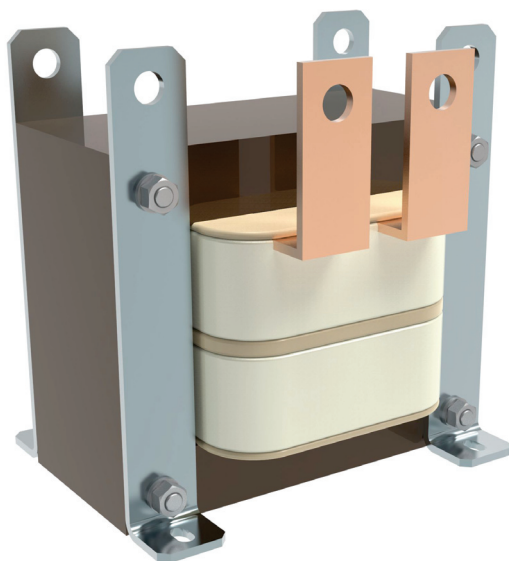
SK Electric has become synonymous with, on-time delivery, and uncompromised quality, which is the reason we have been nominated by our suppliers numerous times as their best global supplier.

## APPLICATIONS

- Medical
- Transport
- Industrial equipment
- Renewable energy
- Defence
- Power supplies

## STANDARDS

- IEC60076-6



# DC REACTORS

## Technical Specifications:

Rated line voltage: 1,000VDC max

Rated frequency: 100-300Hz

Rated current: 10-600 A dc

Insulation: class H (180°C)

Temperature rise

(loaded as in normal operation):  $\leq 140^{\circ}\text{C}$

Operating Temperature:  $0^{\circ}\text{C} - 40^{\circ}\text{C}$

Dielectric Strength: 3,000Vrms Hipot

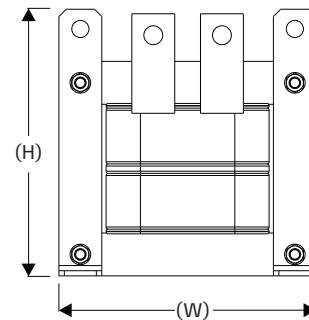
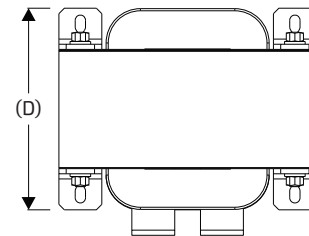
Cooling method: Natural air

Maximum operating altitude: 2,000m

Not all customers have the same requirements, so here at SK Electric we work with you to develop a solution that best meets your needs. We covers all aspects from, standards and certifications to, specific input and output requirements, labelling, mounting options, packaging etc.

We can supply standalone transformers, or incorporate additional components, assemble subassemblies and manufacture complete finished products. All manufactured and tested to your specifications.

MODEL	TYPE	RATED CURRENT	INDUCTANCE (mH)	(D)	(W)	(H)	WEIGHT (KG)	
(ALL DIMENSIONS IN MM)								
DCR-010A	A	10	6.3	84	120	130	6.6	
DCR-020A		20	3.6	74				
DCR-030A		30	2.0	79	125	140	8.1	
DCR-040A		40	2.0					
DCR-050A		50	1.08	92	135	150	14	
DCR-065A		65	0.8					
DCR-080A		80	0.7					
DCR-100A		100	0.54					
DCR-150A		B	150	0.41	105	140	220	47
DCR-200A			200	0.33				
DCR-250A	250		0.26	118	155	260	76	
DCR-300A	300		0.26					
DCR-350A	350		0.17					
DCR-450A	450		0.14					
DCR-500A	500		0.06	128	165	280	132	
DCR-600A	600		0.058					



A

B

