

SDR R-CORE TRANSFORMERS 3kVA-100kVA

ADVANTAGES

Features: SDR R-core series transformers are three phase isolated power transformers. SDR R-core type power transformers have larger power output, higher duty cycle capability, higher efficiency, are physical smaller in size, more cost efficient, lower impedance and flux leakage in comparison to traditional EI type transformers.

Efficiency: Efficiency rating exceeding 92% is generally achieved through SK design.

Shape: The SDR R-core transformers combines three R-cores to produce a symmetrical structure, in a 60 degree triangular configuration.

Winding: Special winding machines and highly skilled staff ensure consistent accurately spaced windings on all transformers.

Exciting current: Due to the unique design, the exciting current is minimized as all the magnetic paths are in alignment with the rolling direction of the electrical steel.

Insulation: Whilst one bobbin is used per phase, high temperature class layer insulation ensures complete separation between primary and secondary windings, and increase dielectric strength resulting in the highest safety possible standards.

Heat: Heat generation is minimal due to low iron losses. The large surface area of the coil allows for better heat dissipation.

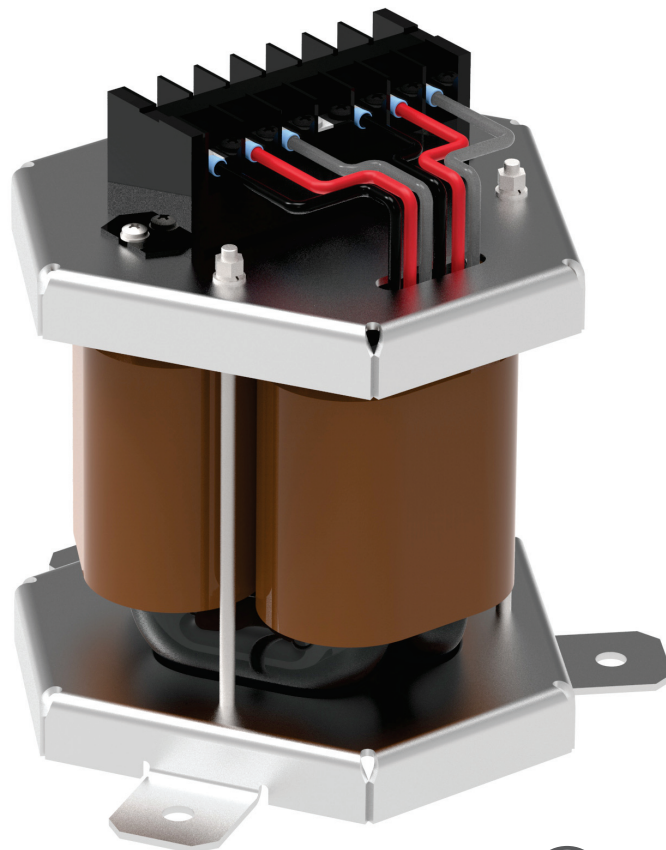
Mounting: Through SK Electric's transformer design expertise, and R-core's minimal weight characteristics, we can customise transformers to suit any available spaces, installed either horizontally or vertically.

APPLICATIONS

- Medical imaging devices
- Surgery room equipment
- Railway and transportation
- Shipping and logistic industry
- Industrial machinery and tooling
- Power supply industry
- Control circuit power
- Security industry
- Defence industry

STANDARDS

- UL/IEC/EN 60601-1
- UL/IEC/EN 61558-1



SDR R-CORE TRANSFORMERS 3kVA-100kVA

Technical Specifications:

Rated Power: 3kVA to 100kVA
 Input Voltage: 208-600V Delta/Star Configuration
 Rated frequency: 50/60Hz
 Insulation Class: Class B/H
 Temperature rise: (AMBmax $\leq 40^{\circ}\text{C}$) : $\leq 90^{\circ}\text{C}/140^{\circ}\text{C}$
 Protection Class: IP00
 Cooling method: Natural air
 Dielectric Strength: 3,000Vrms Hipot
 3,000VAC/50Hz/60s
 Elevation above sea level: 3,000m max

Not all customers have the same requirements, so here at SK Electric we work with you to develop a solution that best meets your needs. We covers all aspects from, standards and certifications to, specific input and output requirements, labelling, mounting options, packaging etc.

We can supply standalone transformers, or incorporate additional components, assemble subassemblies and manufacture complete finished products. All manufactured and tested to your specifications.

Model	Power kVA	(H)	(W)	(D)	WEIGHT (KG)
(ALL DIMENSIONS IN MM)					
SDR-3.0K	3	320	300	310	35
SDR-4.5K	4.5	340	320	330	43
SDR-6K	6	370	340	360	50
SDR-10K	10	380	360	360	71
SDR-15K	15	430	400	430	102
SDR-20K	20	445	420	430	120
SDR-30K	30	545	510	480	150
SDR-45K	45	600	560	520	182
SDR-60K	60	630	580	550	238
SDR-80K	80	660	600	570	280
SDR-100K	100	710	650	640	375

