

SR R-CORE TRANSFORMERS 400VA- 10kVA

ADVANTAGES

Features: SR R-core Series transformers are three phase isolated power transformers. SR R-core type power transformers have larger power output, higher duty cycle capability, higher efficiency, are physical smaller in size, more cost efficient, lower impedance and flux leakage in comparison to traditional EI type transformers.

Efficiency: Efficiency rating exceeding 97% is generally achieved through SK design.

Shape: The SR R-core transformer combines three R-cores to produce a symmetrical structure.

Winding: Special winding machines and highly skilled staff ensure consistent accurately spaced windings on all transformers.

Exciting current: Due to the unique design, the exciting current is minimized as all the magnetic paths are in alignment with the rolling direction of the electrical steel.

Insulation: Whilst one bobbin is used per phase, high temperature class layer insulation ensures complete separation between primary and secondary windings, and increase dielectric strength resulting in the highest safety possible standards.

Heat: Heat generation is minimal due to low iron losses. The large surface area of the coil allows for better heat dissipation.

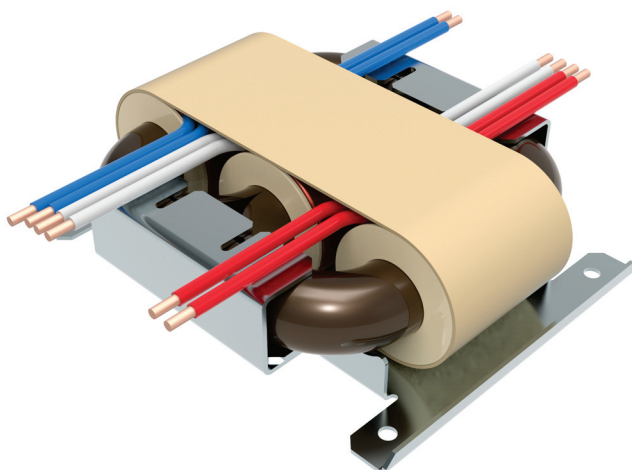
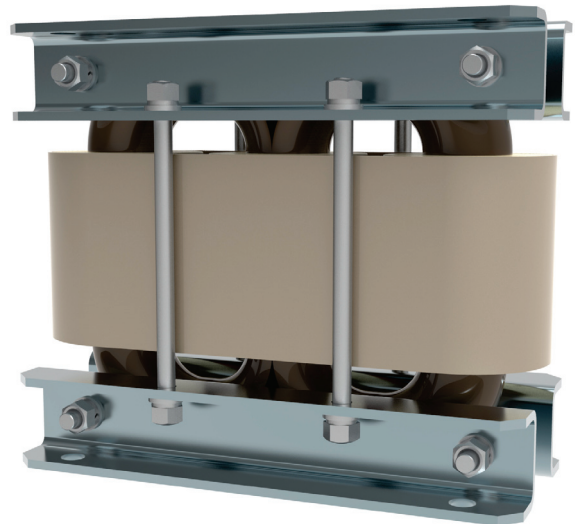
Mounting: Through SK Electric's transformer design expertise, and R-core's minimal weight characteristics, we can customise transformers to suit any available spaces, installed either horizontally or vertically.

APPLICATIONS

- Medical imaging devices
- Surgery room equipment
- Railway and transportation
- Shipping and logistic industry
- Industrial machinery and tooling
- Power supply products
- Control circuit power
- Security industry
- Defence industry

STANDARDS

- UL/IEC/EN 60601-1
- UL/IEC/EN 61558-1



SR R-CORE TRANSFORMERS 400VA- 10KVA

Technical Specifications:

Rated power: 400VA to 10KVA
 Input Voltage: 208-600V Delta/Star Configuration
 Rated frequency: 50/60Hz
 Insulation Class: Class B/H
 Temperature rise: (AMBmax $\leq 40^{\circ}\text{C}$) : $\leq 90^{\circ}\text{C}/140^{\circ}\text{C}$
 Protection Class: IP00
 Cooling method: Natural air
 Dielectric Strength: 3,000Vrms Hipot,
 3,000VAC/50Hz/60s
 Elevation above sea level: 3,000m max

Not all customers have the same requirements, so here at SK Electric we work with you to develop a solution that best meets your needs. We covers all aspects from, standards and certifications to, specific input and output requirements, labelling, mounting options, packaging etc.

We can supply standalone transformers, or incorporate additional components, assemble subassemblies and manufacture complete finished products. All manufactured and tested to your specifications.

Model	POWER VA	TYPE	(W)	(D)	(H)	WEIGHT (KG)
(ALL DIMENSIONS IN MM)						
SR-400	400	-H	178	159	64	4.7-7
		-V	189	64	163	
SR-500	500	-H	196	167	69	5.8-9
		-V	210	69	170	
SR-750	750	-H	220	185	75	8.5-11
		-V	220	75	187	
SR-900	900	-H	218	188	75	10-13
		-V	222	80	189	
SR-1200	1,200	-H	239	203	85	12.8-16
		-V	239	90	207	
SR-1500	1,500	-H	259	255	92	16-20
		-V	275	92	233	
SR-2000	2,000	-H	281	241	101	21-27
		-V	289	101	243	
SR-3000	3,000	-H	300	251	109	25-32
		-V	305	115	260	
SR-5000	5,000	-H	356	274	125	43-51
		-V	368	125	281	
SR-7500	7,500	-H	393	320	187	64-73
		-V	412	162	400	
SR-10000	10,000	-H	400	340	200	75-86
		-V	415	166	420	

